

INNOVATIVE PTFE HOSE SOLUTIONS



AN ISO 9001:2000 COMPANY

Smooth Bore PTFE Hose

Construction

- Inner core: PTFE
- Reinforcement: Single braid of 303/304 series stainless steel wire

Application Standards

- Meets or exceeds SAE J517 – 100R14

Vacuum Service

- Sizes -3 through -12 rated for full vacuum

Temperature Range

- Continuous: -65°F to 450°F (-54°C to 232°C)
- Intermittent: -65°F to 500°F (-54°C to 260°C)

Common PTFE Applications

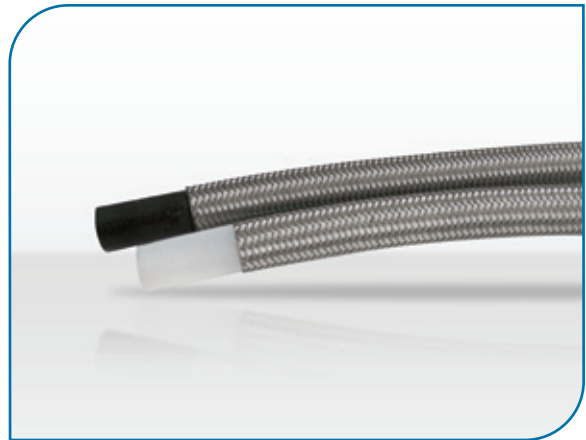
- Chemicals
- Lubricant Handling
- Steam
- Air Compressors
- Hydraulics
- Hot Presses
- Chlorine
- Paints
- Molten Plastics
- Food Processing
- Machinery
- Power Generation
- Hot Melt
- Steel/Aluminum
- Engines
- Medical Applications
- Compressed Gas
- Dehydrators
- Turbines
- Pulp and Paper
- Auto Claves
- Pharmaceuticals
- Waterblast
- Pumps

MFC030/31 – R14 – Smooth Bore PTFE

MFC030 – Natural

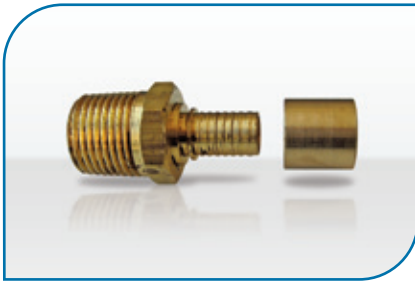
MFC031 – Black Conductive

| Hose Part Number | Dash Size | Hose I.D. | | Hose O.D. | | Working Pressure @ 70°F PSI | Min. Burst Pressure @ 70°F PSI | Min. Bend Radius | |
|------------------|-----------|-----------|------|-----------|------|--------------------------------|-----------------------------------|------------------|-----|
| | | IN | MM | IN | MM | | | IN | MM |
| MFC030/31-3 | -3 | 1/8 | 3.0 | 0.24 | 6.2 | 3,260 | 13,040 | 1.6 | 40 |
| MFC030/31-4 | -4 | 3/16 | 5.0 | 0.30 | 7.6 | 2,750 | 11,000 | 2.0 | 50 |
| MFC030/31-5 | -5 | 1/4 | 6.0 | 0.35 | 8.8 | 2,610 | 10,440 | 3.0 | 75 |
| MFC030/31-6 | -6 | 5/16 | 8.0 | 0.43 | 11.0 | 2,540 | 10,160 | 4.0 | 100 |
| MFC030/31-8 | -8 | 13/32 | 10.3 | 0.54 | 13.7 | 2,030 | 8,120 | 5.4 | 165 |
| MFC030/31-10 | -10 | 1/2 | 12.5 | 0.64 | 16.2 | 1,740 | 6,960 | 6.6 | 165 |
| MFC030/31-12 | -12 | 5/8 | 16.0 | 0.74 | 18.8 | 1,270 | 5,080 | 8.0 | 200 |
| MFC030/31-16 | -16 | 7/8 | 22.2 | 1.03 | 26.2 | 870 | 3,480 | 9.2 | 230 |



Fitting Options

Description: Male Pipe
Material: Brass



| Thread Size | Hose Size |
|-----------------|-----------|
| MNPT (1/8-27) | -4 |
| MNPT (1/4-18) | -4 |
| MNPT (1/4-18) | -5 |
| MNPT (1/8-27) | -5 |
| MNPT (1/4-18) | -6 |
| MNPT (3/8-18) | -6 |
| MNPT (3/8-18) | -8 |
| MNPT (1/2-14) | -8 |
| MNPT (1/2-14) | -10 |
| MNPT (3/4-14) | -12 |
| MNPT (1-11 1/2) | -16 |

Description: Male Pipe
Material: 303 Stainless Steel



316 Stainless Steel also available

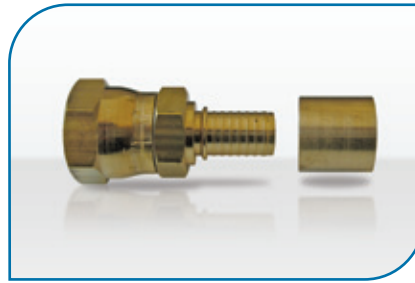
| Thread Size | Hose Size |
|-----------------|-----------|
| MNPT (1/8-27) | -4 |
| MNPT (1/4-18) | -4 |
| MNPT (1/4-18) | -5 |
| MNPT (1/8-27) | -5 |
| MNPT (1/4-18) | -6 |
| MNPT (3/8-18) | -6 |
| MNPT (3/8-18) | -8 |
| MNPT (1/2-14) | -8 |
| MNPT (1/2-14) | -10 |
| MNPT (3/4-14) | -12 |
| MNPT (1-11 1/2) | -16 |

Description: Male Pipe
Material: Carbon Steel



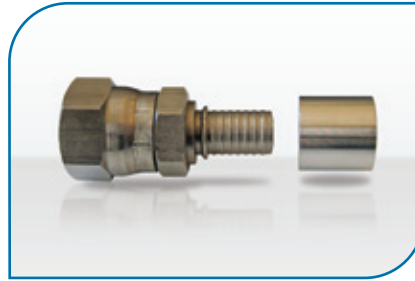
| Thread Size | Hose Size |
|-----------------|-----------|
| MNPT (1/8-27) | -4 |
| MNPT (1/4-18) | -4 |
| MNPT (1/4-18) | -5 |
| MNPT (1/8-27) | -5 |
| MNPT (1/4-18) | -6 |
| MNPT (3/8-18) | -6 |
| MNPT (3/8-18) | -8 |
| MNPT (1/2-14) | -8 |
| MNPT (1/2-14) | -10 |
| MNPT (3/4-14) | -12 |
| MNPT (1-11 1/2) | -16 |

Description: Female JIC Swivel
Material: Brass



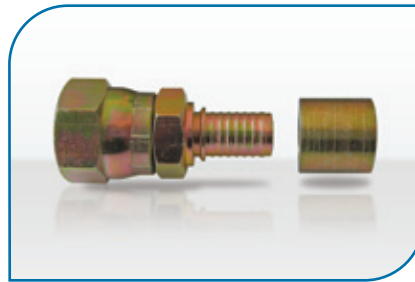
| Thread Size | Hose Size |
|-----------------|-----------|
| JIC (3/8-24) | -3 |
| JIC (7/16-20) | -4 |
| JIC (1/2-20) | -5 |
| JIC (9/16-18) | -6 |
| JIC (3/4-16) | -8 |
| JIC (7/8-14) | -10 |
| JIC (1 1/16-12) | -12 |
| JIC (1 5/16-12) | -16 |

Description: Female JIC Swivel
Material: 303 Stainless Steel



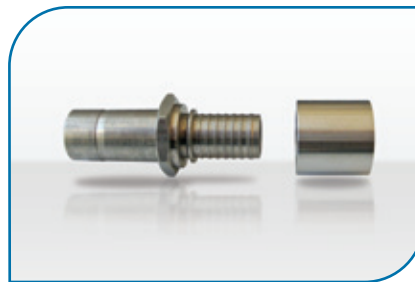
| Thread Size | Hose Size |
|-----------------|-----------|
| JIC (3/8-24) | -3 |
| JIC (7/16-20) | -3 |
| JIC (3/8-24) | -4 |
| JIC (7/16-20) | -4 |
| JIC (7/16-20) | -5 |
| JIC (1/2-20) | -5 |
| JIC (9/16-18) | -6 |
| JIC (3/4-16) | -8 |
| JIC (7/8-14) | -10 |
| JIC (1 1/16-12) | -12 |
| JIC (1 5/16-12) | -16 |

Description: Female JIC Swivel
Material: Carbon Steel



| Thread Size | Hose Size |
|-----------------|-----------|
| JIC (7/16-20) | -4 |
| JIC (7/16-20) | -5 |
| JIC (1/2-20) | -5 |
| JIC (9/16-18) | -6 |
| JIC (3/4-16) | -8 |
| JIC (7/8-14) | -10 |
| JIC (1 1/16-12) | -12 |
| JIC (1 5/16-12) | -16 |

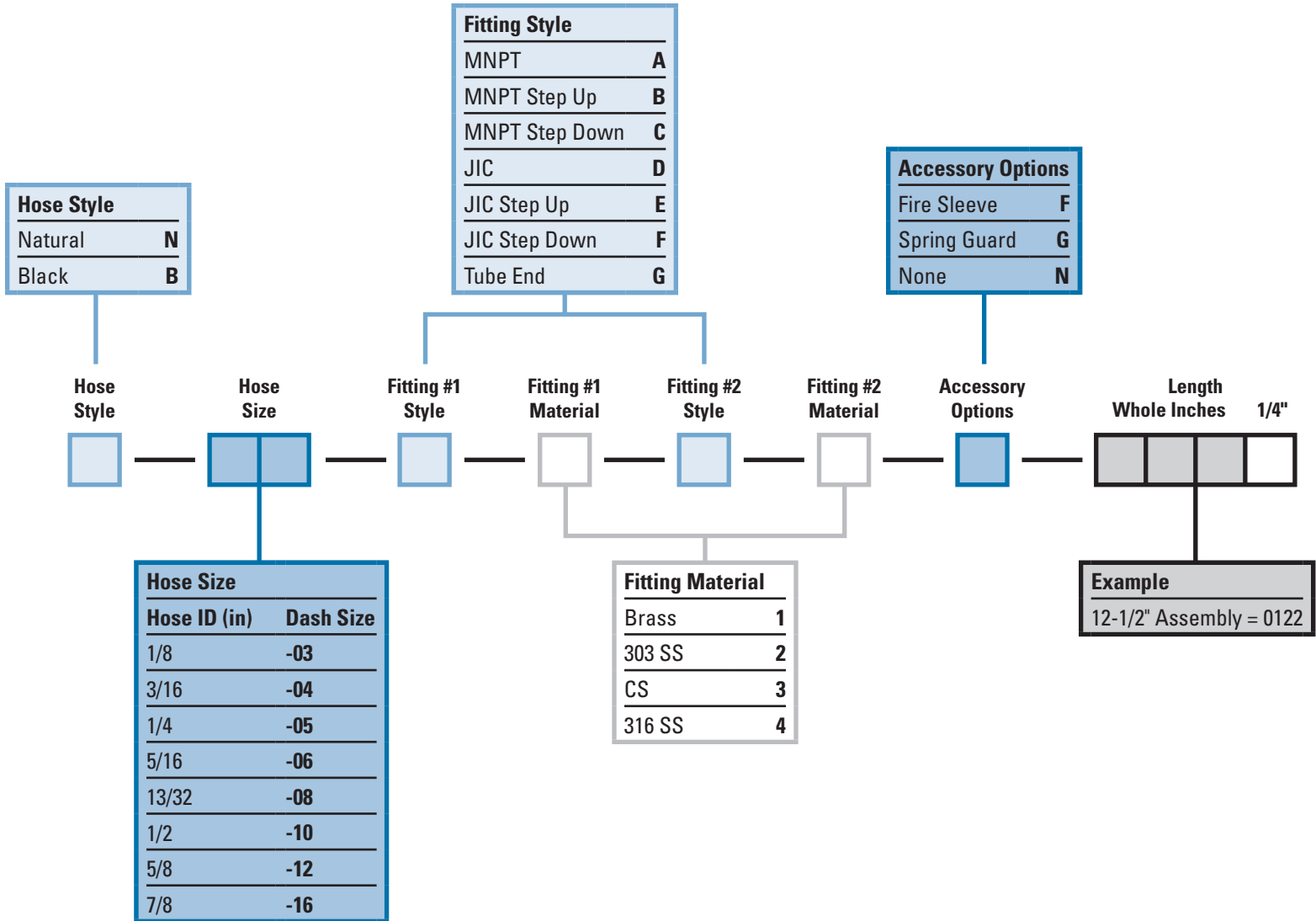
Description: Tube End
Material: 303 Stainless Steel



| Thread Size | Hose Size |
|------------------|-----------|
| 1/4" OD Tube End | -4 |
| 3/8" OD Tube End | -6 |
| 1/2" OD Tube End | -8 |
| 3/4" OD Tube End | -12 |
| 1" OD Tube End | -16 |

Other fitting and adapter styles also available

Assembly Part Number



MFC Home Office

803 Transfer Road
 Saint Paul, MN 55114
 Tel: (651) 645-7522 (800) 351-9069
 Fax: (651) 645-8259
 Web: www.mfchose.com
 Email: info@mnflex.com

Galesburg Branch Office

P.O. Box 1265
 698 HWY 150 East
 Galesburg, IL 61402-1265
 Tel: (309) 342-6171
 Fax: (309) 342-6946

Peoria Branch Office

817 N.E. Adams Street
 Peoria, IL 61603
 Tel: (309) 674-6570
 Fax: (309) 674-6471

Grand Rapids Branch Office

1201 S.E. 7th Avenue
 Grand Rapids, MN 55744
 Tel: (218) 999-9069
 Fax: (218) 999-9031



AN ISO 9001:2000 COMPANY

www.mfchose.com